

# Imaged Document Cover Sheet

The document following this cover sheet is an imaged document supplied by LANDATA®, Land Victoria.

Document Type	<b>plan</b>
Document Identification	<b>LP95420</b>
Number of Pages (excluding this cover sheet)	<b>1</b>
Document Assembled	<b>14/11/2015 08:53</b>

**Copyright and disclaimer notice:**

© State of Victoria. This publication is copyright. No part may be reproduced by any process except in accordance with the provisions of the Copyright Act and for the purposes of Section 32 of the Sale of Land Act 1962 or pursuant to a written agreement. The information is only valid at the time and in the form obtained from the LANDATA® System. The State of Victoria accepts no responsibility for any subsequent release, publication or reproduction of the information.

The document is invalid if this cover sheet is removed or altered.

LP95420

EDITION 2

APPROVED 24/7/73

PLAN OF SUBDIVISION  PART OF CROWN ALLOTS.2&3,SEC.B  PARISH: CUT PAW PAW COUNTY: BOURKE  Measurements are in Feet & Inches Conversion Factor FEET X 0.3048 = METRES	APPROPRIATIONS	ENCUMBRANCES & OTHER NOTATIONS
	Drainage, Sewerage & Way ..... Brown	The land coloured blue is encumbered vide L.P. 76219 for Drainage & Sewerage Distances of splayed corners are 10 feet  Reference Marks (Iron Pipes) have been placed at the corners of all street intersections.

VOL. 9105 FOL. 259

DEPTH LIMITATION = 15.24 METRES

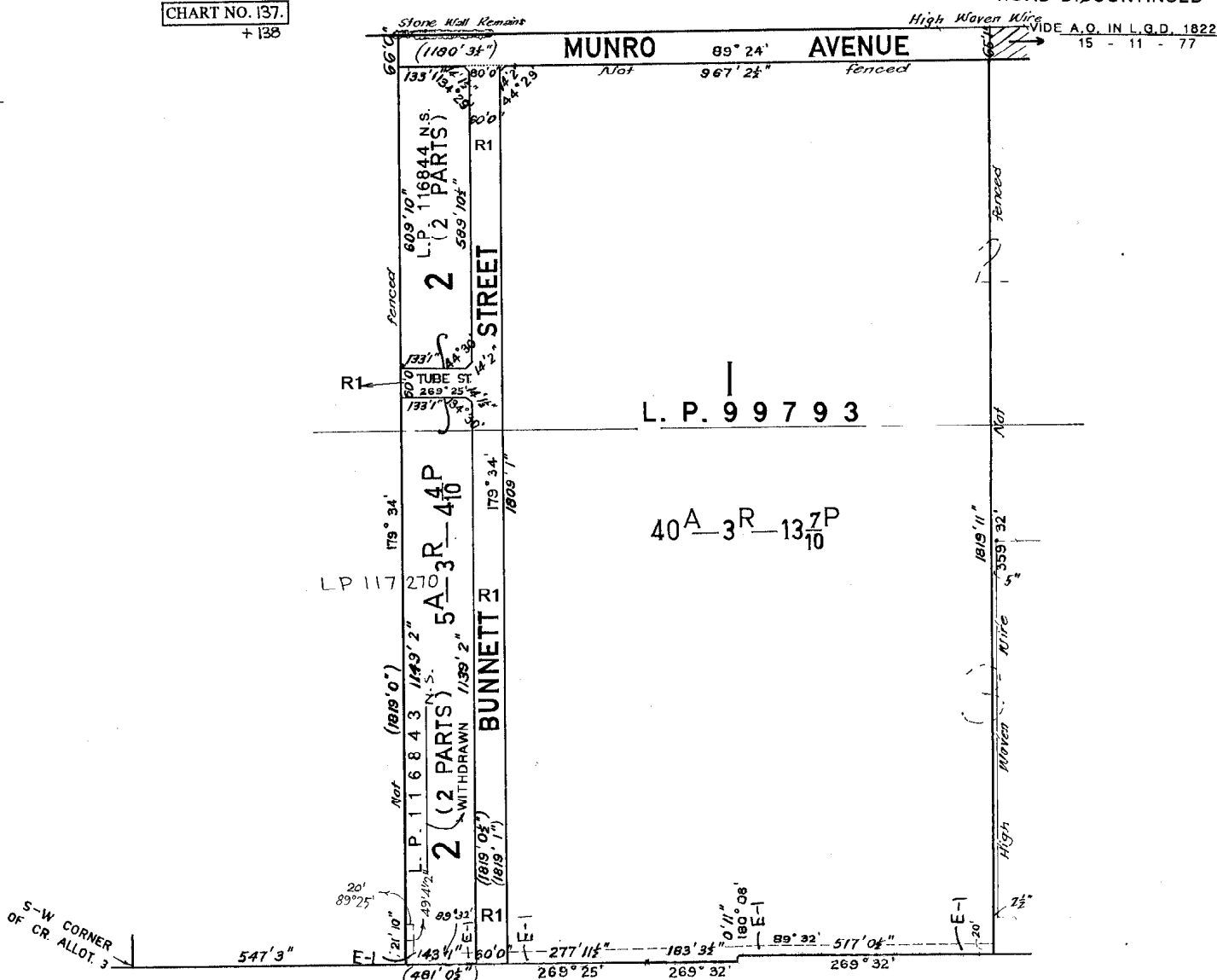
COLOUR CONVERSION

E-1 = BLUE  
R1 = BROWN



CHART NO. 137.  
+ 138

ROAD DISCONTINUED



LIST OF MODIFICATIONS			APPROVAL DATE 24/7/73		
LAND	MODIFICATION	DEALING No.	DATE	A.R.T.	EDN. No.
LOT 2	REMOVAL OF EASEMENT	VIDE AP 1510 SEC 73 5 - 12 - 78		guy	2